

Fast Facts

Business:

Lime Hollow Center for Environment and Culture

Locations:

Visitor Center

338 McLean Road
Cortland, NY

Education Center

3091 Gracie Road
Cortland, NY

Phone:

607-662-4632

E-mail:

info@limehollow.org

Hours:

Tues - Fri: 10 am - 5 pm
Sat: 12 pm - 4 pm
Sun & Mon: Closed

Trails:

Open dawn til dusk
every day!

www.limehollow.org



REC

The Great Outdoor Classroom

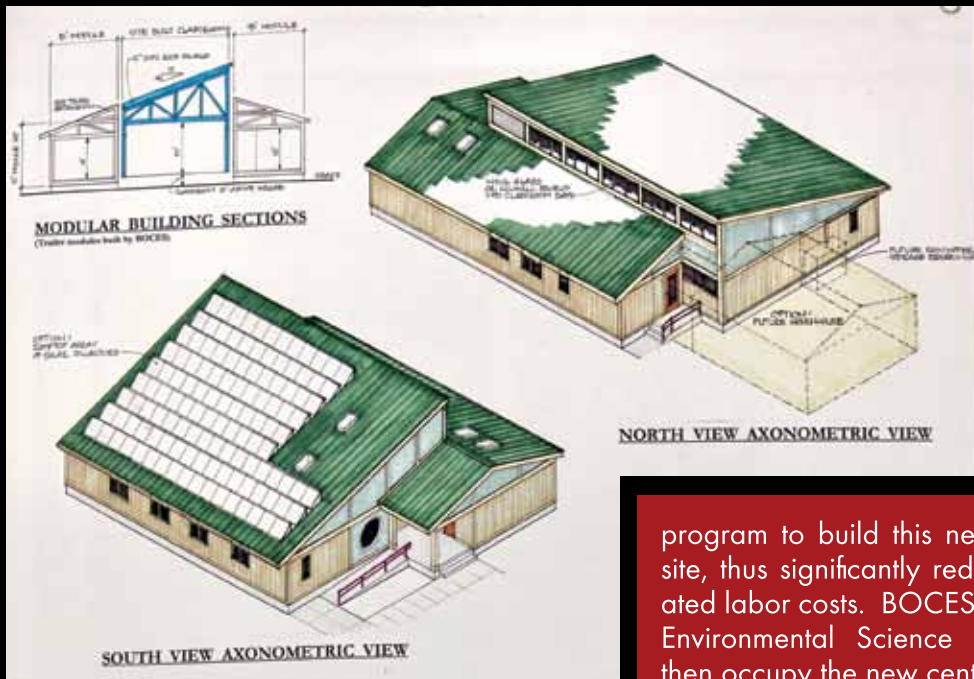
As Central New York's premier nature center and preserve, Lime Hollow Center for Environment and Culture has experienced continued growth in programming, camp attendance, and visitation over the past six years. Our 10 weeks of themed summer camp, for instance, has seen a 236% increase in that timeframe alone—from 314 campers in 2006 to 1,057 in 2012. In light of such continued surges in demand, supplying adequate space to anchor each of our three age-specific camps has become increasingly more difficult.

Directly adjacent to our nature preserve sits the USGS Tunison Laboratory of Aquatic Science, which houses the BOCES New Vision Environmental Science program for high school seniors. New Vision offers field-based, experiential teaching utilizing much of Lime Hollow's property and ecosystem diversity. Recently, the lab underwent a multi-million dollar expansion and has be-

come one of our nation's primary agencies focused on restoring and preserving native fish within the Great Lakes. As the lab's mission expands, federal government restrictions increase.

In short, both Lime Hollow and BOCES New Vision require greater teaching capacity—a shared goal that provides a natural partnership for a new education center. Through a unique collaboration with our local Onondaga, Cortland, and Madison (OCM) BOCES, Lime Hollow plans to cost-share the construction of a modular, functional, yet naturally elegant Education Center to serve both Lime Hollow and BOCES clientele. An exciting public-private partnership of this kind will leverage BOCES' Construction Technology





program to build this new facility off site, thus significantly reducing associated labor costs. BOCES' New Vision Environmental Science students will then occupy the new center during the school year while Lime Hollow will use the facility primarily during the summer months for our camps, for a total utilization figure of an impressive 50 weeks per year.

In essence, our project will create a truly unprecedented opportunity for high school students to build a new education center for other high school students! Through such collaborative and unprecedented expansion, it is our goal to increase Lime Hollow's capacity to both the general public and our future summer campers, and to offer BOCES New Vision an unparalleled, net-zero energy classroom to train the next generation of teachers, ornithologists, botanists, foresters, landscape architects, and conservation leaders. ■

